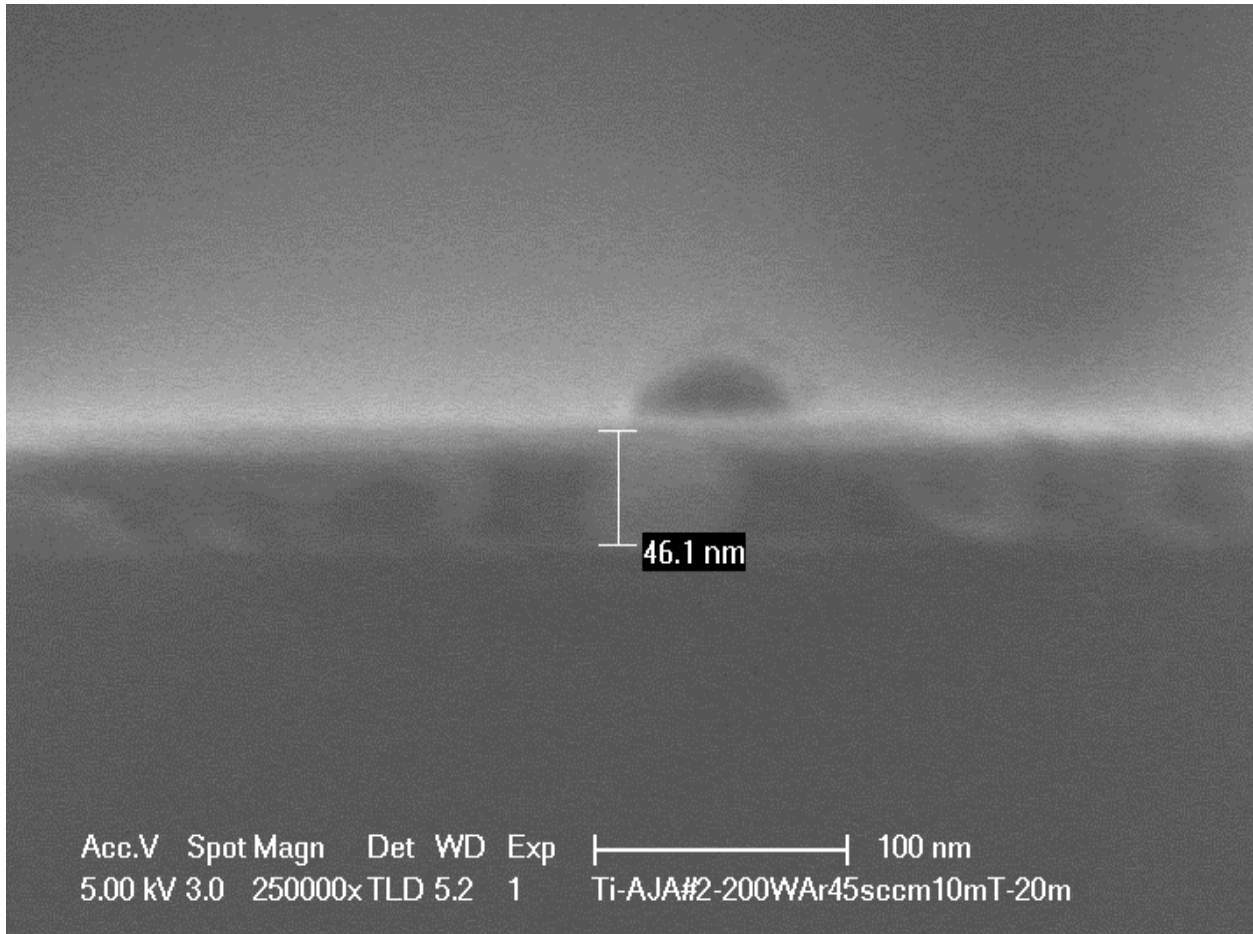


Ti/Au rates and SEM cross sections AJA#2 (Sputter4)

1)Ti (Sputtering Film by AJA#2)

Condition: 10mT, 200W(309V), ArFlow-rate=45sccm, z=2.75, angle=5, 10rpm, and time=20minutes.

Sputtering Rate=2.3nm/min



2)Au (Sputtering Film by AJA#2)

Condition: 10mT, 300W(512V), ArFlow-rate=45sccm, z=2.75, angle=5, 10rpm, and time=20minutes.

Sputtering Rate=45.4nm/min

